

QUESTIONS & ANSWERS

Kill your exam at first Attempt



Microsoft

70-742

Identity with Windows Server 2016

<http://killexams.com/exam-detail/70-742>



QUESTION: 68

You network contains an Active Directory domain named contoso.com. The domain contains 1,000 desktop computers and 500 laptops. An organizational unit (OU) named OU1 contains the computer accounts for the desktop computers and the laptops.

You create a Windows PowerShell script named Script1.ps1 that removes temporary files and cookies. You create a Group Policy object (GPO) named GPO1 and link GPO1 to OU1. You need to run the script once weekly only on the laptops. What should you do?

- A. In GPO1, create a File preference that uses item-level targeting.
- B. In GPO1, create a Scheduled Tasks preference that uses item-level targeting.
- C. In GPO1, configure the File System security policy. Attach a WMI filter to GPO1.
- D. In GPO1, add Script1.ps1 as a startup script. Attach a WMI filter to GPO1.

Answer: B

QUESTION: 69

Your network contains an Active Directory forest named contoso.com. The forest contains an enterprise root certification authority (CA) on a server that runs Windows Server 2016. You plan to create and issue a custom subordinate CA template.

You need to prevent subordinate CAs from issuing subordinate certificates. What should you configure in the template?

- A. the Request Handling settings
- B. the Cryptography settings
- C. the Basic Constraints extension
- D. the Security settings

Answer: D

QUESTION: 70

Your network contains an Active Directory domain named contoso.com. The domain contains an Active Directory Federation Services (AD FS) server named Server1. On a standalone server named Server2, you install and configure the Web Application Proxy. You have an internal web application named WebApp1. AD FS has a relying party trust for WebApp1. You need to provide external users with access to WebApp1. Authentication to WebApp1 must use AD FS pre-authentication. Which tool should you use to publish WebApp1?

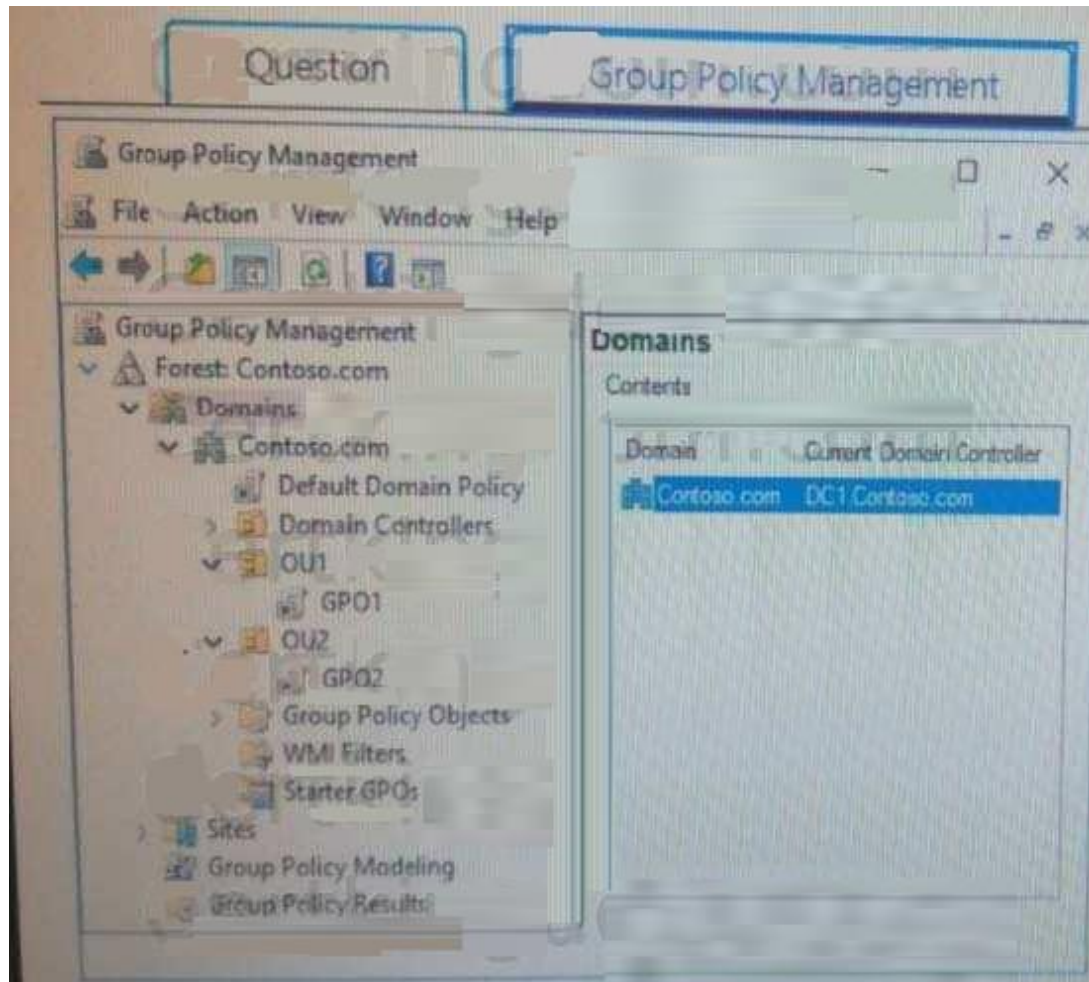
- A. Remote Access Management on Server1
- B. AD FS Management on Server2
- C. Remote Access Management on Server2
- D. Routing and Remote Access on Server1
- E. AD FS Management on Server1.

Answer: E

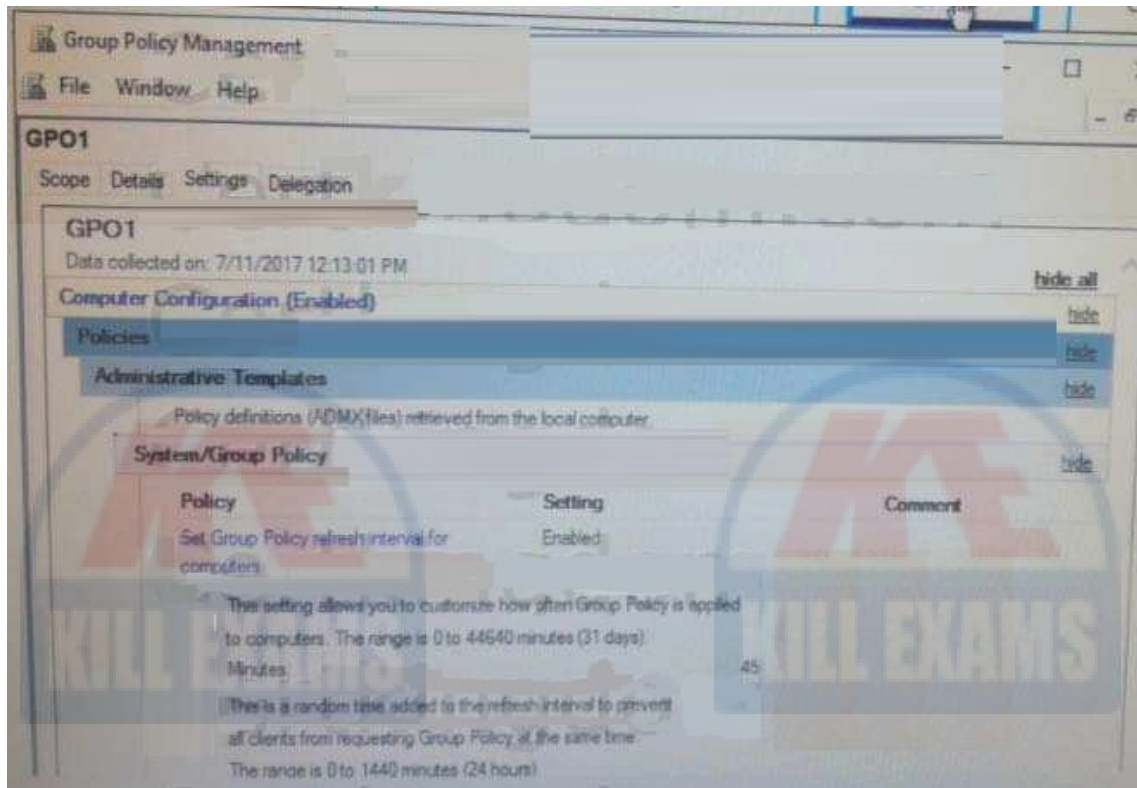
QUESTION: 71

HOTSPOT

A user named User1 is in OU1. A computer named Computer1 is in OU2. The settings of GPO1 are configured as shown in the GPO1 exhibit. (Click the Exhibit button.)

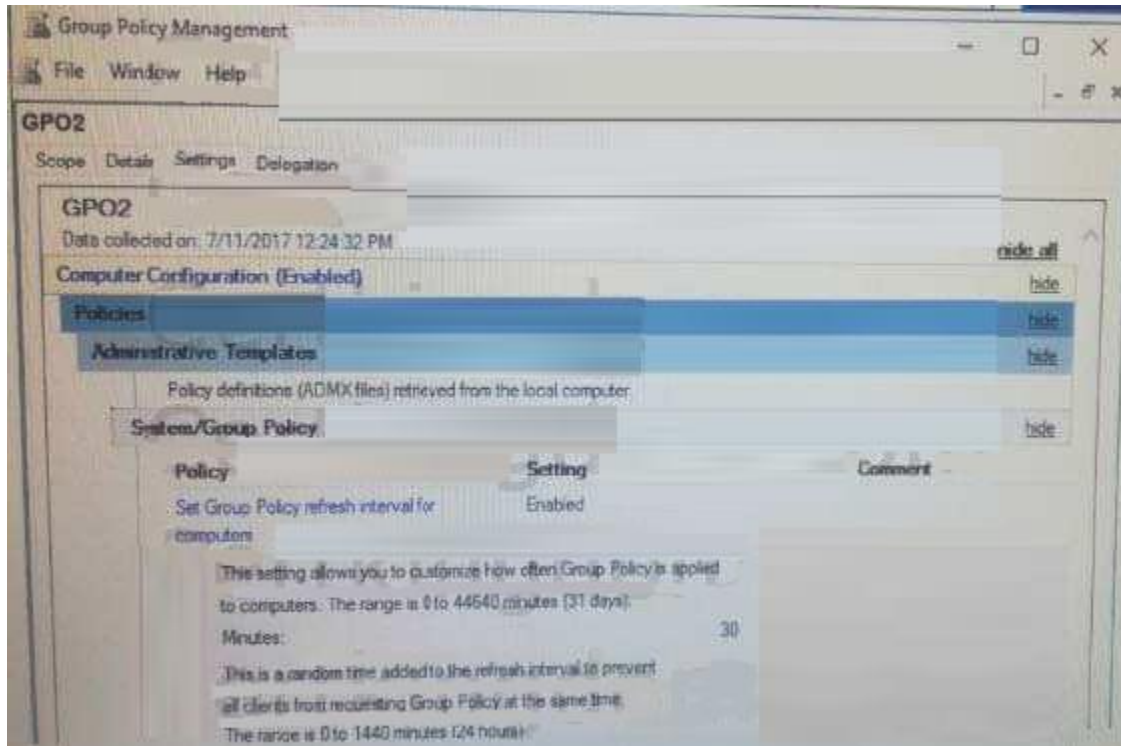


Exhibit



The settings of GP02 are configured as shown in the GP02 exhibit. (Click the Exhibit button.)





For each of the following statements, select Yes if the statement is true. Otherwise, select No. NOTE: Each correct selection is worth one point.

Statements	Yes	No
User1 signs in to Computer2. The user Group Policy settings will refresh every 45 minutes.	<input checked="" type="radio"/>	<input type="radio"/>
User1 signs in to Computer2. The computer Group Policy will refresh every 30 minutes.	<input type="radio"/>	<input type="radio"/>

Answer:
Exhibit

Statements	Yes	No
User1 signs in to Computer2. The user Group Policy settings will refresh every 45 minutes.	<input checked="" type="radio"/>	<input type="radio"/>
User1 signs in to Computer2. The computer Group Policy will refresh every 30 minutes.	<input type="radio"/>	<input checked="" type="radio"/>

QUESTION: 72

Your network contains an Active Directory domain named contoso.com. All users are in an organizational unit (OU) named Corp_Users. You plan to modify the description of all the users who have a string in their mobile phone number. You need to view a list of

the users that will be modified. What should you run?

- A. Get-APUser-Filter "mobilePhone-Like '*514*'"
- B. Get-ADOrganizationalUnit-LDAPFilter "(mobilePhone='*514*')"
- C. Get-ADOrganizationalUnit-Filter "mobilePhone-Like '*514*'"
- D. Get-ADUser-LDAPFilter "(mobilePhone='*514*')"

Answer: A

QUESTION: 73

HOTSPOT

Your network contains an Active Directory domain named contoso.com. The domain contains two servers named Server1 and Server2 that run Windows Server 2016. Server1 has Microsoft System Center 2016 Virtual Machine Manager (VMM) installed. Server2 has IP Address Management (IPAM) installed. You create a domain user named User1. You need to integrate IPAM and VMM. VMM must use the account of User1 to manage IPAM. The solution must use the principle of least privilege. What should you do on each server? To answer, select the appropriate options in the answer area.

Answer Area

On Server1:

<input type="checkbox"/>	Create a Run as Account that uses User1
<input type="checkbox"/>	Add User1 to the Fabric Administrator user role
<input type="checkbox"/>	Add User1 to the Remote Management Users group

On Server2:

<input type="checkbox"/>	Add User1 to IPAM Administrator Role
<input type="checkbox"/>	Add User1 to IPAM ASM Administrator Role
<input type="checkbox"/>	Add User1 to IPAM MSM Administrator Role

Answer:

Exhibit

Answer Area

On Server1:	<div>▼</div> <div>Create a Run as Account that uses User1</div> <div>Add User1 to the Fabric Administrator user role</div> <div>Add User1 to the Remote Management Users group</div>
On Server2:	<div>▼</div> <div>Add User1 to IPAM Administrator Role</div> <div>Add User1 to IPAM ASM Administrator Role</div> <div>Add User1 to IPAM MSM Administrator Role</div>

Explanation:

Exhibit

Answer Area

On Server1:	<div>▼</div> <div>Create a Run as Account that uses User1</div> <div>Add User1 to the Fabric Administrator user role</div> <div>Add User1 to the Remote Management Users group</div>
On Server2:	<div>▼</div> <div>Add User1 to IPAM Administrator Role</div> <div>Add User1 to IPAM ASM Administrator Role</div> <div>Add User1 to IPAM MSM Administrator Role</div>

References:

[https://technet.microsoft.com/en-us/library/dn783349\(v=ws.11\).aspx](https://technet.microsoft.com/en-us/library/dn783349(v=ws.11).aspx)

QUESTION: 74

Your network contains an Active Directory forest named contoso.com. The forest contains a single domain. The domain contains a server named Server1.

An administrator named Admin01 plans to configure Server1 as a standalone certification authority (CA). You need to identify to which group Admin01 must be a member to configure Server1 as a standalone CA. The solution must use the principle of least privilege. To which group should you add Admin01?

- A. Administrators on Server1.
- B. Domain Admins in contoso.com
- C. Cert Publishers on Server1
- D. Key Admins in contoso.com

Answer: A



For More exams visit <https://killexams.com/vendors-exam-list>



Kill your exam at First Attempt....Guaranteed!