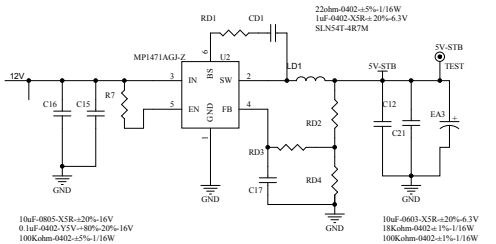


NC10uF-0402-Y5V-80%-20%-16V
NC10uF-0402-Y5V-80%-20%-16V
NC10uF-0402-Y5V-80%-20%-16V
10uF-0603-XSR-20%-6.3V
LC1117CLTR33

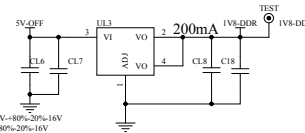
NC10uF-0402-Y5V-80%-20%-16V
NC10uF-0402-Y5V-80%-20%-16V
NC10uF-0402-Y5V-80%-20%-16V
10uF-0603-XSR-20%-6.3V
300ohms-0402±25%

1V2 L2 VDD_1V2



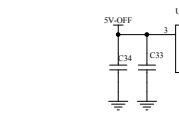
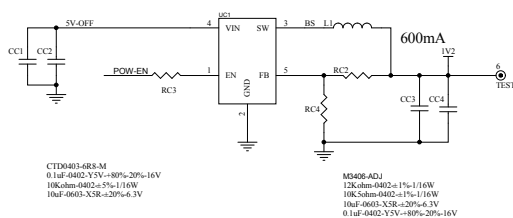
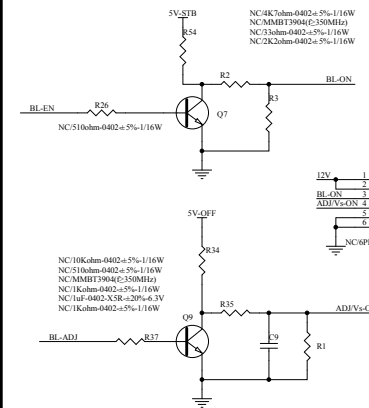
LC1117CLTR33
0.1uF-0402-Y5V-80%-20%-16V
0.1uF-0402-Y5V-80%-20%-16V
10uF-0603-XSR-20%-6.3V
0.1uF-0402-Y5V-80%-20%-16V

NC10uF-0402-Y5V-80%-20%-16V
0.1uF-0402-Y5V-80%-20%-16V
NC10uF-0403-XSR-20%-6.3V
LC1117CLTR18
10uF-0603-XSR-20%-6.3V

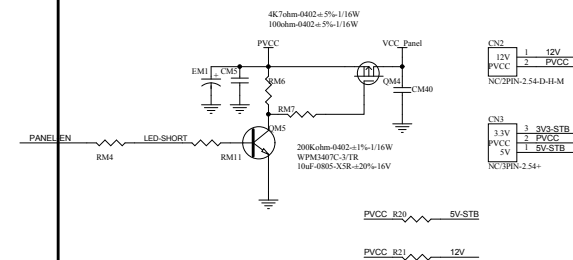


BL-EN R26 BL-ON
1Kohm-0402±5%/1/16W

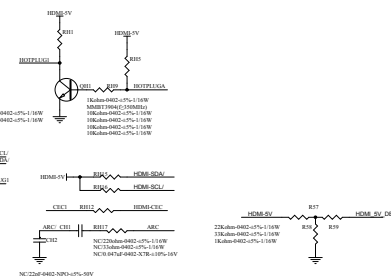
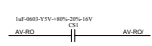
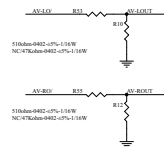
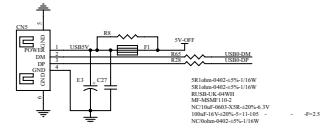
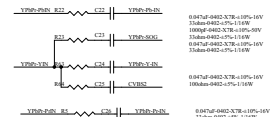
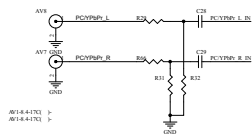
BL-ADJ R30 PWM-DIM
510ohm-0402±5%/1/16W

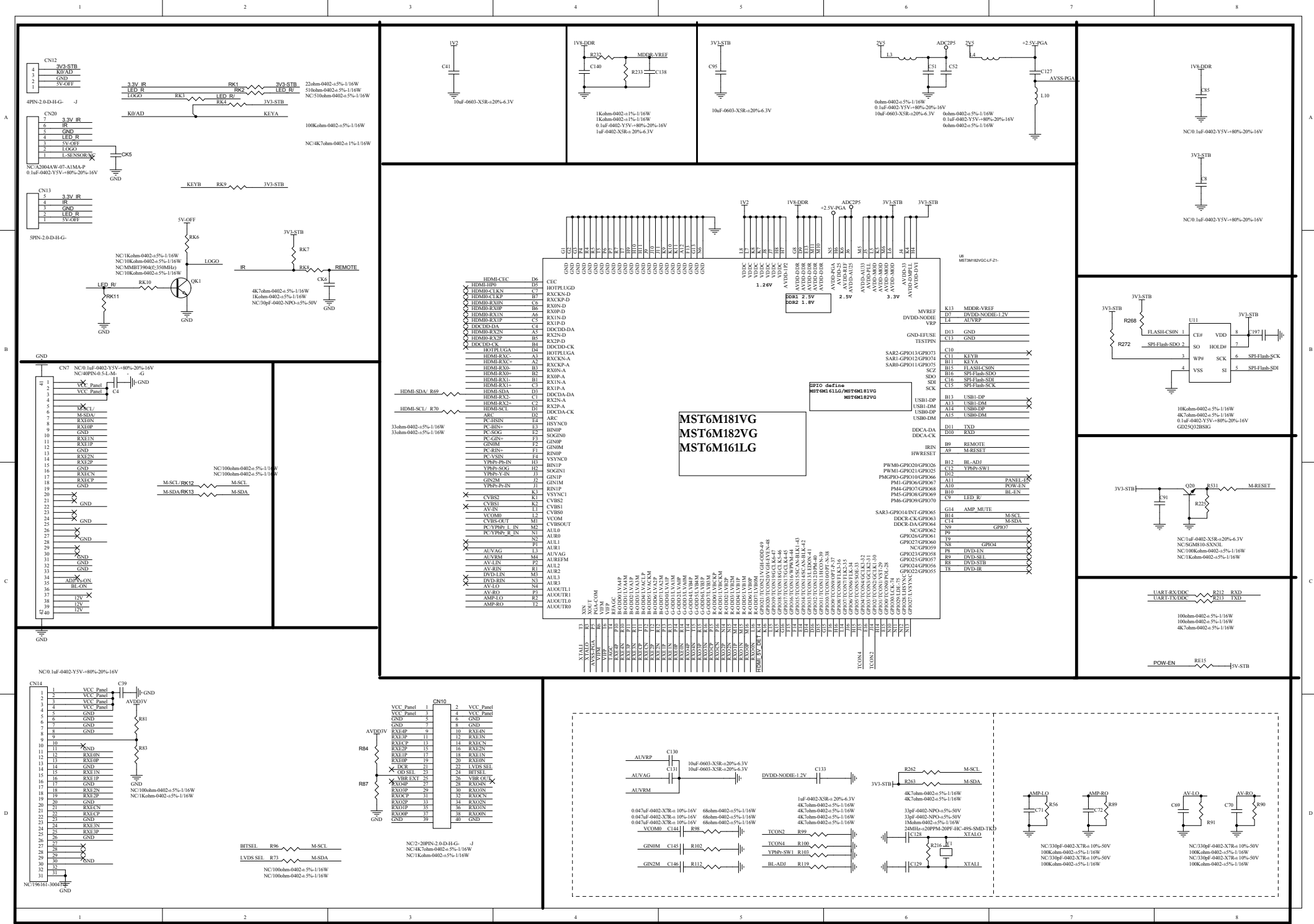


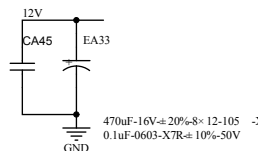
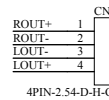
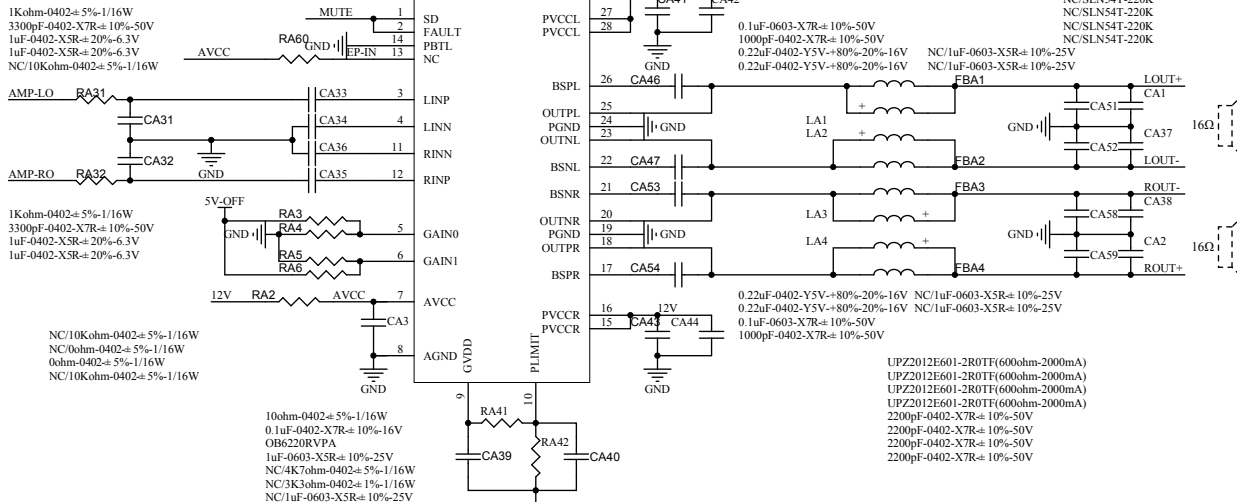
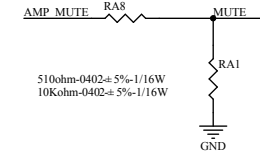
LC1117CLTR33
0.1uF-0402-Y5V-80%-20%-16V
1uF-0402-XSR-20%-6.3V
1uF-0402-XSR-20%-6.3V
1uF-0603-XSR-20%-6.3V
M7(GOOD-A0K)

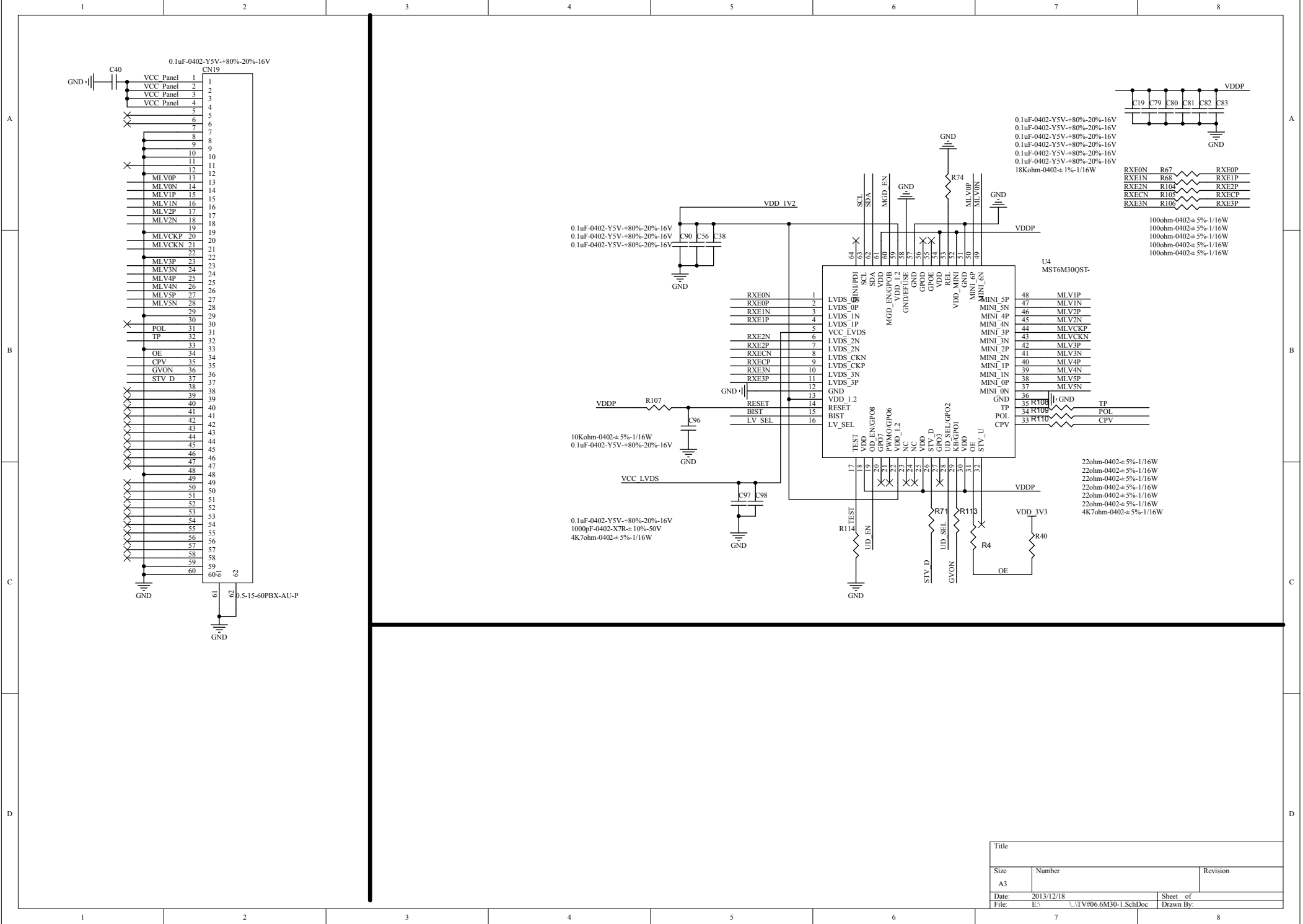


NC10uF-0402-Y5V-80%-20%-16V
4K7ohm-0402±5%/1/16W
MMBT3904(C:350MHz)
NC10uF-10V-20%-5-11-105
0ohm-0805±5%/1/8W
NC0ohm-0805±5%/1/8W









Title		
Size	Number	Revision
A3		
Date:	2013/12/18	Sheet of
File:	E:\TV#06M30-1.SchDoc	Drawn By:

Title		
Size A4	Number	Revision
Date:	2013/12/18	Sheet of
File:	E:\...TV#07.6M30-2.SchDoc	Drawn By: