

# SA – Special Operations Tour 2015



SA-SOT2015

For IVAO simulations network only

Not related to Real Flight



## Special Operations Tour 2015



Our Best Wishes to you all and enjoy the tour. Saudi Arabian Division Staff. Page 1 of 14



## SA-SOT2015

### It is very important to read the following

Saudi Division Staff would like to invite you to fly one of the most top tours of the Saudi Arabian division. This is Special Operation Tour 2015 we called it (Securing the Area) join the challenge now. Read the Manual carefully, as it will give all the information you need to complete this tour. Always be aware about the civilian traffic! Do not forget: the active ATC is always the boss, so inform him about your mission in your flight plan and via (none) verbal communication. In most cases, you'll only receive the departure and arrival airports.

#### General rules:

- On the IVAO™ network **Hi-jacking, war simulation and all other forms of aggression** are not allowed
- Max. Speed limit for **military a/c** is **350 IAS below FL100**.
- Max. Speed limit for civilian a/c is 250 IAS below FL100.
- All times must be reported in UTC.
- Accelerated mode is NOT allowed.
- The maximum allowed FLIGHT LEVEL (**as shown in the flight remarks**).
- All legs **MUST** be flown online, with IVAO weather engine.
- You must disconnect before starting the next leg.
- A maximum disconnection of 15 minutes will be accepted.
- Direct routing will not be accepted (unless approved by FIR ATC).
- Flight plans with wrong departure/arrival airfields will NOT be accepted.
- Mention in the remark box any change of Call sign during the flight if need.
- Please note tailwind or headwind and report it while submitting leg for validation.
- Maximum allowed speed below 10,000 feet for Military aircraft is (350 IAS) or on request and ATC approval.
- This tour will end on (31/01/2016)

#### Special and mandatory rules for SA-SOT15:

1	<b>Aircraft</b>	Any type of military aircraft (preferred the listed in flight data table)
2	<b>Call sign</b>	Any Military call sign is allowed (preferred RSFnnn) nnn any numbers
3	<b>Flight rules</b>	IFR / VFR ( According to flight data table )
4	<b>Flying route</b>	Default FS route is not allowed you may fly VOR TO VOR / or you may fly by tracking the GPS route (see page 5)
5	<b>Flight Level</b>	According to flight data table



# SA – Special Operations Tour 2015



SA-SOT2015

Some helpful information

These are the aircrafts belong to Royal Saudi Air Force in IVAO MTL library:

<p><b>Boeing 737-700 (B737)</b></p>  <p>MTL internal name: B737RSF</p>	<p><b>Boeing 737-700 (B737)</b></p>  <p>MTL internal name: B737RSFWL</p>
<p><b>Boeing 737-800 (B738)</b></p>  <p>MTL internal name: B738RSFWL</p>	<p><b>Lockheed C-130 Hercules (C130)</b></p>  <p>MTL internal name: C130RSF</p>
<p><b>Lockheed C-130 Hercules (C130)</b></p>  <p>MTL internal name: C130RSF2</p>	<p><b>Boeing 707 AWACS (E3CF)</b></p>  <p>MTL internal name: E3CFRSF</p>
<p><b>McDonnell Douglas F-15 Eagle (F15)</b></p>  <p>MTL internal name: F15 RSF</p>	<p><b>Bae Systems Hawk (HAWK)</b></p>  <p>MTL internal name: HAWKRSF</p>
<p><b>Bae Systems Hawk (HAWK)</b></p>  <p>MTL internal name: HAWKRSFDEM</p>	<p><b>Panavia Tornado (TOR)</b></p>  <p>MTL internal name: TOR RSF</p>





# SA – Special Operations Tour 2015

## SA-SOT2015

### IVAP flight plan:

To make sure your legs will be accepted do your flight plan as following example:

ACARS - ICAO International Flight Plan

International Flight Plan

<<= (FPL) **7 aircraft ident.** RSF407 - **8 flight rules** I - **type of flight** M - <<=

- **9 number** 1 - **type of aircraft** C130 - **wake turbulence cat** M - **10 equipment** SDFGITWY / S - <<=

- **13 departure aerodrome** OEJN - **departure time** 1248 - <<=

- **15 cruising speed** N 0260 - **level** F 250

**route**  
BONUM B417 TAGNA T532 KIA N687 KINIB UN687 KFA \* 1

- **16 destination aerodrome** OEDR - **total EET** 0230 - **altn aerodrome** OEDF - **second altn aerodrome** - <<=

**other information**  
- RMK/SA SO14 TOUR A LEG01 /NORMAL OPERATION /CARGO \* 2

**supplementary information**  
- **19 endurance** E/ 0310 - **persons on board** P/ 5 - **pilot in command** C/ HUSSAIN ABDULRAZAK - <<=

- **aircraft color and markings (MTL)**  
- A/ C130 - Royal Saudi Air Force (RSF) - <<=

Load... Save... Reset REQ ROUTE ... Send FPL Cancel

- All the data will be written by your own flight data (call sign, airports, flight level ...etc)
- \*1 you have to write the route if you want to fly either by tracking the GPS or by FMC.
- \*2 If you want to fly by VOR TO VOR you have to write the names of the VOR at the route box and mention in the remark box before (RMK/SA SO15 /NORMAL OPERATION) put (VOR TO VOR).







## SA-SOT2015

### Creating a GPS route to be tracked:

You may fly by any type of C-130 and as known it does not have a FMC, so here is an example to create a GPS route to your flight:

Departure airport: OEJN

Arrival airport: OEDR

Route: BONUM B417 TAGNA T532 KIA N687 KINIB UN687 KFA

go to simroutes website:

<http://www.simroutes.com/fb2/ParseRoute.aspx>

**SimRoutes**

[Sign In](#) | [Search Routes](#) | [Generate Routes](#) | [Airways](#) | [Oceanic Tracks](#)

**SimRoutes Route Generator**

Departure:   **Departure**

SID:

Route:  **Paste the route**

Arrival:   **Arrival**

STAR:

**click here**

After clicking the generate button the next page will appear



# SA – Special Operations Tour 2015

SA-SOT2015

**SimRoutes**

Sign In | Search Routes | Generate Routes | Airways | Oceanic Tracks |

**Make sure from the data** OEJN - OEDR Flight Details

Departing	Arriving
OEJN - King Abdulaziz Intl (48' MSL) (OEJD) - Jeddah FIR	OEDR - King Abdulaziz Ab (84' MSL) (OEJD)
OEJN 041200Z 24008KT 9999 FEW030CB SCT035 27/18 Q1011 TEMPO TS	OEDR 041200Z 02009KT CAVOK 21/09 Q1011

Route Details	Alternate
High Altitude	None
BONUM B417 TAGNA T532 KIA N687 KINIB UN687 KFA	

**Comments**

User Defined Route

**Aircraft Information** **aircraft type**

Aircraft Type: LOCKHEED: C-130 HERCULES Code: C130

Engine Type: Turboprop Engines: 4 Weight Class: Large

**Dispatch**

File Online **select your FS then download** ➡

FS9 FS9 FSInn FSX Level-D 767 PMDG SquawkBox 2 SquawkBox 3/4 vasFMC X-Plane

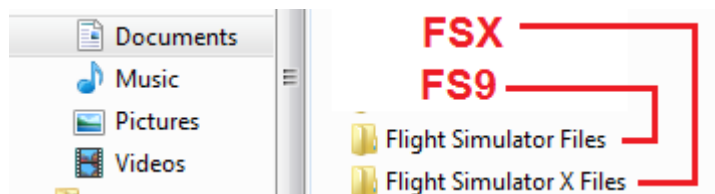
**NOTAMS**

None

**Navigation Log**

IDENT	NAME	FREQ	VIA	Distance (NM)
OEJN	King Abdulaziz Intl			683

After downloading the file move it to your documents folder inside the Flight Simulator Files

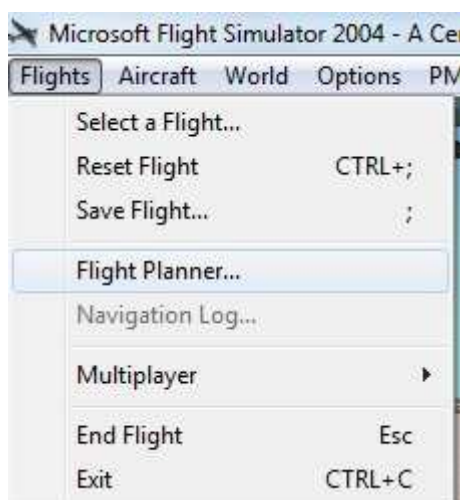


After that start up your FS then go to the airport stand then:

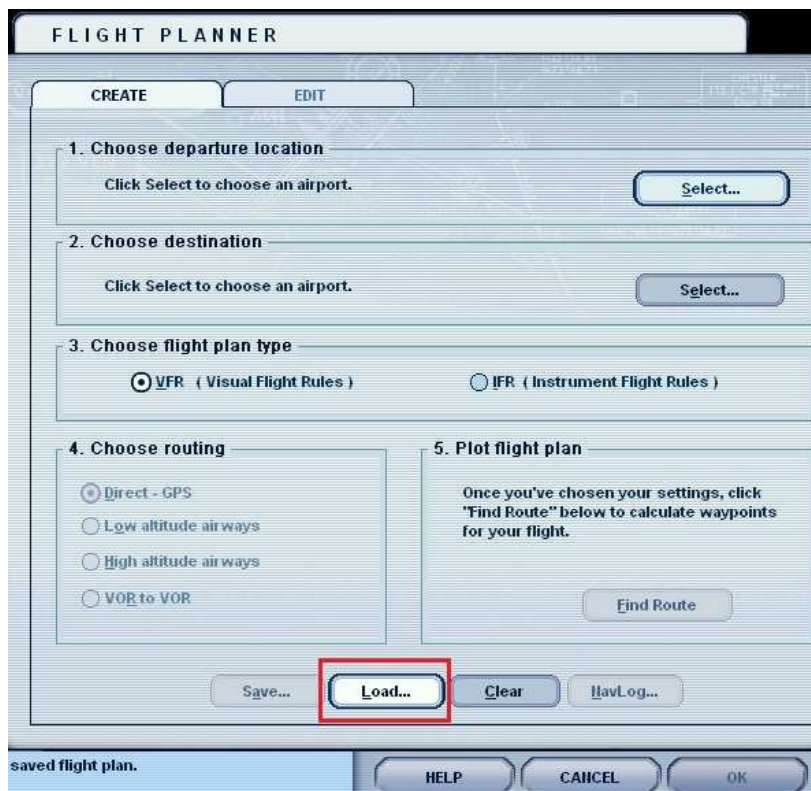




## SA-SOT2015



From the menu select Flights then Flight Planner



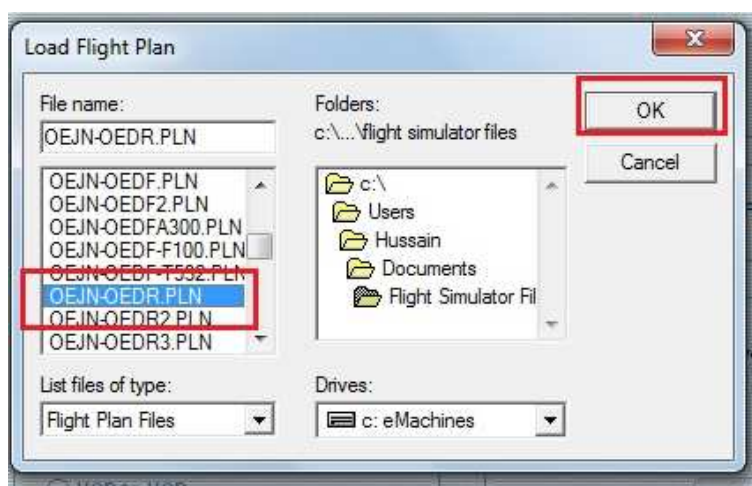
Then click on Load button



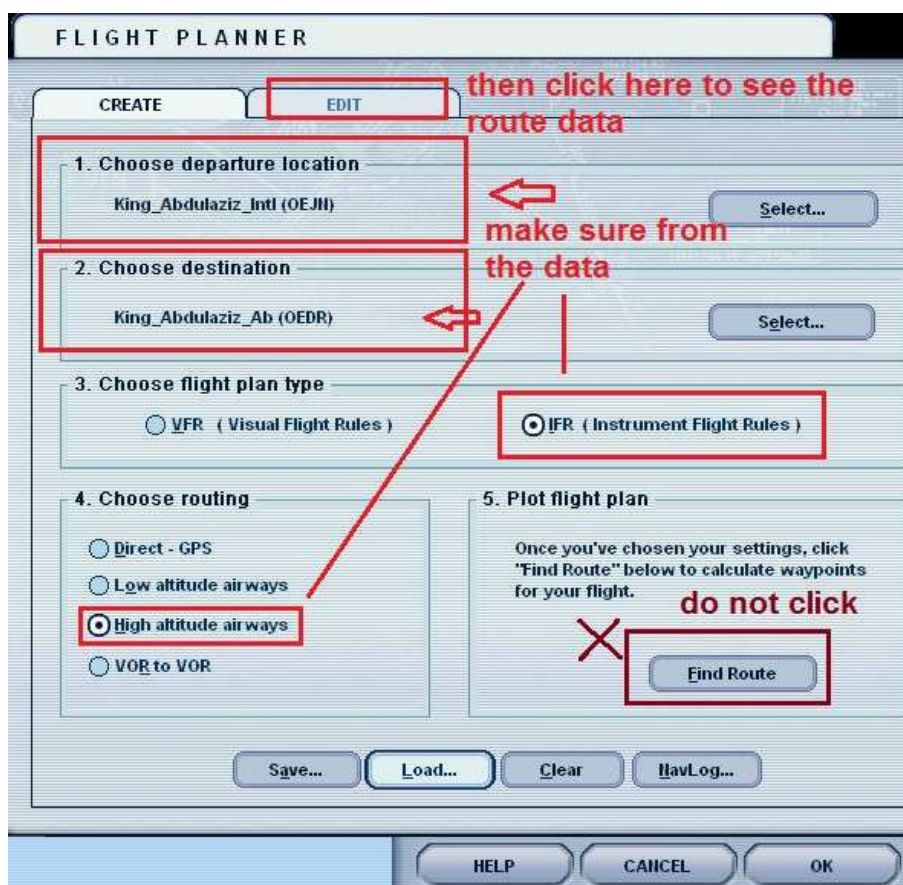




## SA-SOT2015



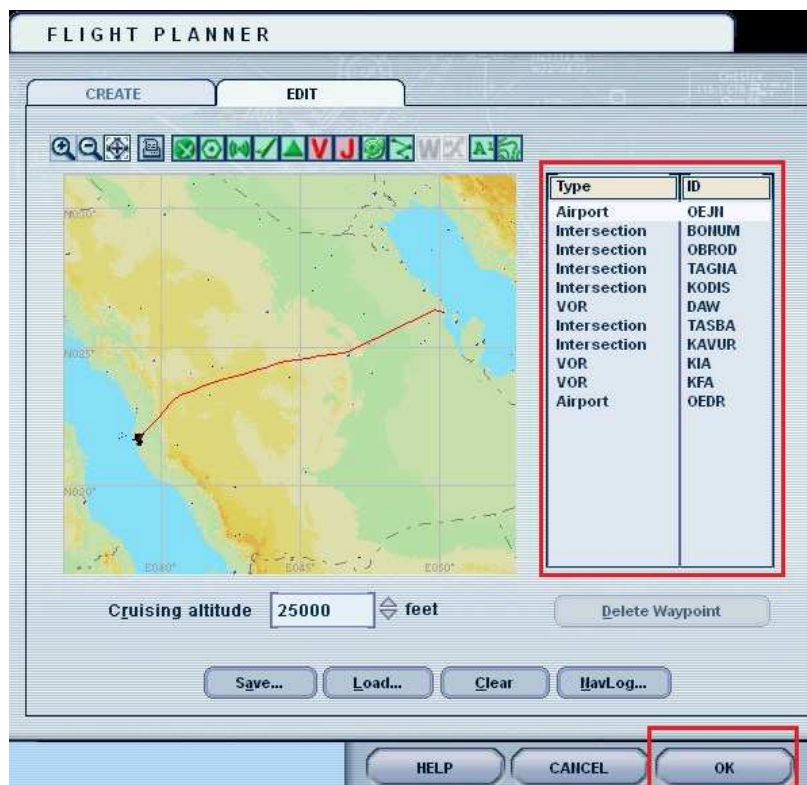
Then select your flight as it is in the documents / Flight simulator Flights folder





## SA-SOT2015

After loading the route data make sure of it then click on Edit button



You will see all the positions and VOR as your route then click OK







### SA-SOT2015

After that a message box will appear click NO to stay at your position at the airport



Then you will see the route at your GPS

Then after your climbing and to start following the route

Change your navigation button to GPS then click NAV

And that can be done on any standard aircraft



This picture for the auto pilot of captain sim C-130 and the way to track the GPS route

**And that can be happened with any standard aircraft**










## SA-SOT2015



### SA-SOT15 FLIGHTS DATA

LEG	Departure	Arrival	Route	Flight data
1	OEJN	OEPS	ISLAM V40 TIF V43 DFN M628 DIPEX UM628 UMRAN M628 DEBAS DCT	A/C : C130,B737 FL: 250 TO 370
LEG 1 Remarks:		Flight rule ( IFR only ), In this leg jet fighter is not allowed <b>Note:</b> - At Jeddah airport (OEJN) use apron 12 and runway 34R/16L.		
2	OEPS	OEPS	DCT RESAL T533 OVEKU T533 GAS G662 HIL R23 ORLES R23 AJF V13 TBK N400/F390 V45 WEJ UT510 KULKI UT510 VEDAX UT510 MESBA UT510 RBG B544 JDW V40 ISLAM V40 TIF V43 DFN V43 BDB UM872 DAW T532 KIA DCT	A/C : Boeing E-3A, B738,C17 FL: start 360 over TBK VOR climb to 370 or 390
LEG 2 Remarks:		<b>Boeing E-3A (AWACS) is preferred</b> , Flight rule ( IFR only ), in this leg jet fighter is not allowed and the flight route in the map should be like this picture:		
3	OEPS	OEDR	DCT TAKTI N687 KFA DCT	A/C : C130,B737 FL: 250 TO 370
LEG 3 Remarks:		Flight rule ( IFR only ), In this leg jet fighter is not allowed		
4	OEDR	OEDR	DCT KFA DCT JBL DCT RAS DCT HFR DCT KMC DCT BPN DCT KFA DCT DHA	A/C: Jet Fighter FL: VFR
LEG 4 Remarks:		Flight rule ( VFR only, VOR TO VOR ), Jet Fighter only the flight route in the map should be like this picture:		
5	OEDR	OEDR	DCT SITER DCT PSA DCT RIY DCT MGA DCT JBL DCT KFA DCT DAH	A/C: Jet Fighter FL: VFR
LEG 5 Remarks:		Flight rule ( VFR only, VOR TO VOR ), Jet Fighter only the flight route in the map should be like this picture:		






## SA-SOT2015

LEG	Departure	Arrival	Route	Flight data
6	OEDR	OETB	DCT KFA G663 TANDA N697 NABEK DCT	A/C : C130,B737 FL: 260 TO 380
<b>LEG 6 Remarks:</b>		Flight rule ( IFR only ), In this leg jet fighter is not allowed		
7	OETB	OEKM	DCT DEMSU V54 WEJ UT510 RBG B412 LAGBO B544 JDW L677 TONBO UL677 MIRIS L677 QUN UL677 KUMRA L677 TALIB V38 ABH DCT	A/C : C130,B737 FL: 260 TO 380
<b>LEG 7 Remarks:</b>		Flight rule ( IFR only ), In this leg jet fighter is not allowed		
8	OEKM	OEKM	DCT BSH DCT BHA DCT TIF DCT QUN DCT ABH DCT	A/C: Jet Fighter FL: VFR
<b>LEG 8 Remarks:</b>		Flight rule ( VFR only, VOR TO VOR ), Jet Fighter only the flight route in the map should be like this picture:		
9	OEKM	OEKM	DCT NEJ DCT SHA DCT WDR DCT BSH DCT ABH DCT	A/C: Jet Fighter FL: VFR
<b>LEG 9 Remarks:</b>		Flight rule ( VFR only, VOR TO VOR ), Jet Fighter only the flight route in the map should be like this picture:		
10	OEKM	OEPS	DCT ELIVI V48 WDR UG667 KITUB V165 MUNTO DCT	A/C : C130,B737 FL: 250 TO 390
<b>LEG 10 Remarks:</b>		Flight rule ( IFR only ), In this leg jet fighter is not allowed		





## SA-SOT2015

LEG	Departure	Arrival	Route	Flight data
11	OEPS	OEPS	DCT RESAL T533 SOKOP DCT LOSEL DCT EGVOP G662 ALKOT DCT GRY R652 TRF V45 AAR V45 RAF V45 HFR ITIXI M691 EMENI UM691 KEDAT M691 BOROP DCT KFA DCT DAH DCT HSA DCT KIREN M430 GOLNO UM430 KOBOX M430 KIA DCT	A/C : Boeing E-3A, B738,C17 FL: start 360 over GRY VOR climb to 370 or 390
LEG 11 Remarks:		Boeing E-3A (AWACS) is preferred, Flight rule ( IFR only ), in this leg jet fighter is not allowed and the flight route in the map should be like this picture:		
12	OEPS	OEDR	DCT TAKTI N687 KFA DCT	A/C : C130,B737 FL: 250 TO 370
LEG 12 Remarks:		Flight rule ( IFR only ), In this leg jet fighter is not allowed		
13	OEDR	OETF	DCT KFA N687 ROSEM UN687 PURSI N687 KINIB UN687 TAKTI N687 KIA UG782 DURMA UM309 LUBUB V41 LADGO DCT	A/C: Jet Fighter FL: 260 TO 410
LEG 13 Remarks:		Flight rule ( IFR only ), In this leg jet fighter is allowed you can test the high speed and if you want to fly more than 1 mac it should be over FL410.		
14	OETF	OEKM	DCT LAKNO V40 ABH DCT	A/C: Jet Fighter FL: 260 TO 410
LEG 14 Remarks:		Flight rule ( IFR only ), In this leg jet fighter is allowed you can test the high speed and if you want to fly more than 1 mac it should be over FL410.		
15	OEKM	OEJN	DCT ABH B544 TONBO DCT	A/C : C130,B737 FL: 260 TO 380
LEG 15 Remarks:		Flight rule ( IFR only ), In this leg jet fighter is not allowed <b>Note:</b> - At Jeddah airport (OEJN) use apron 12 and runway 34R/16L.		







## SA-SOT2015

**Note:**

- At Jeddah airport (OEJN) use apron 12 and runway 34R/16L.
- If you complete all legs you will get the award of Special Operations Tour



# GOOD LUCK

For any information, do not hesitate in contact:

SA-Division Director: [SA-DIR@ivao.earo](mailto:SA-DIR@ivao.earo)

Assistant Director: [SA-ADIR@ivao.earo](mailto:SA-ADIR@ivao.earo)

The SA-SOT 2015 Project was developed by  
Hussain Abdulrazak (389043)

[SA-SOC@ivao.earo](mailto:SA-SOC@ivao.earo)

